



TIKILIVE.COM

TIKILIVE

**MONSTER ENCODER
MANUAL**

How to download and use Monster Encoder

My videos

You have no videos.

Upload new video

Please choose a new FLV file to upload (maximum 100M in size):

Choose a name for this video:

Video description:

Choose video file to upload: BROWSE

UPLOAD VIDEO

[DOWNLOAD MONSTER ENCODER](#)

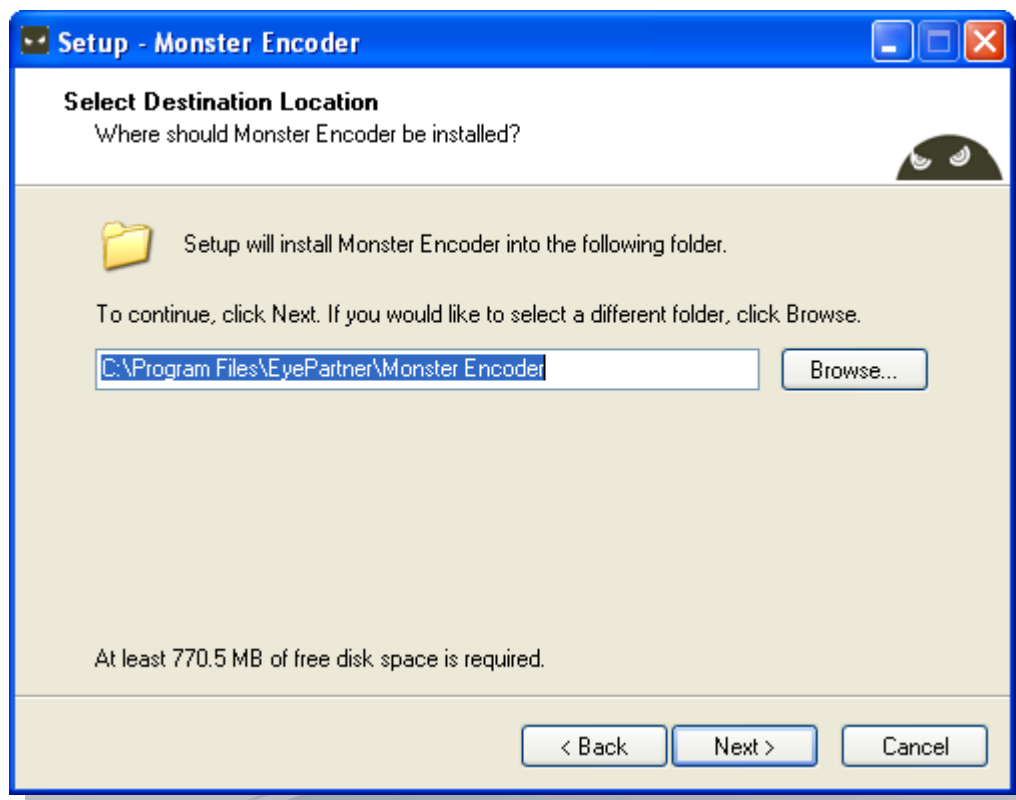
1. Login to your TikiLive account
2. Click on "My Videos" section in the Menu Bar
 Note: The 'My Videos' Section stores recorded LIVE shows and uploaded videos (through Monster Encoder and Movie Uploader)
3. Click on "Download Monster Encoder" link and save the application in your computer.

How to install Monster Encoder

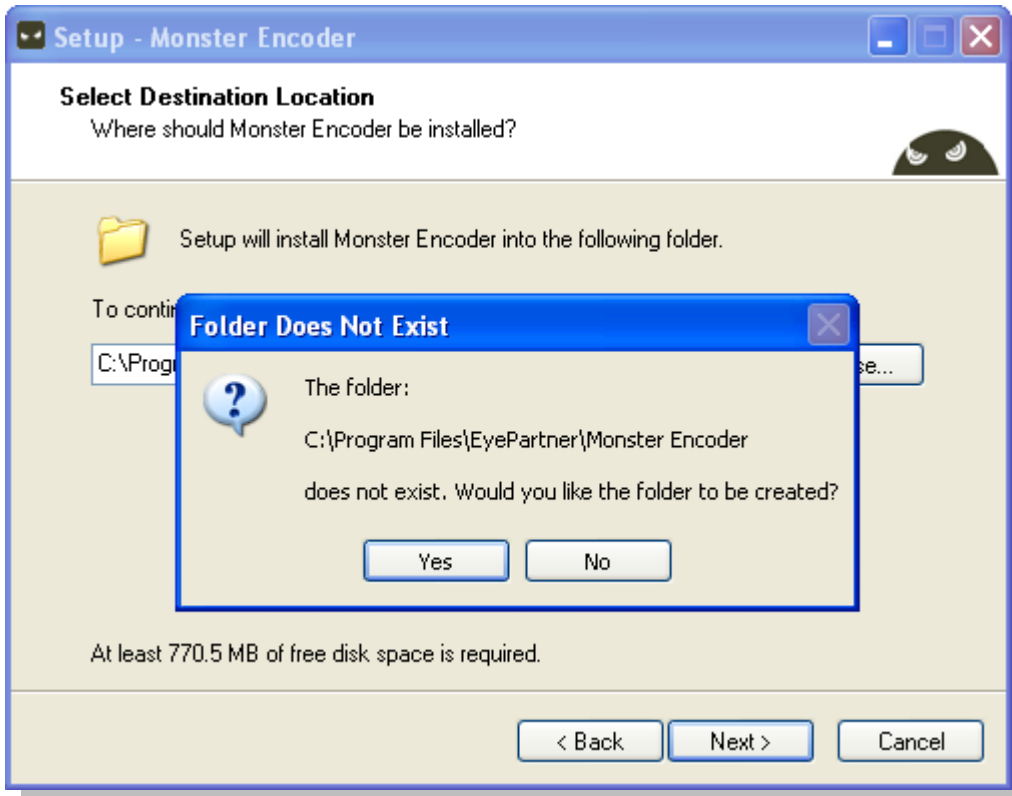
Open The Monster Encoder installer saved on your computer in the previous step.



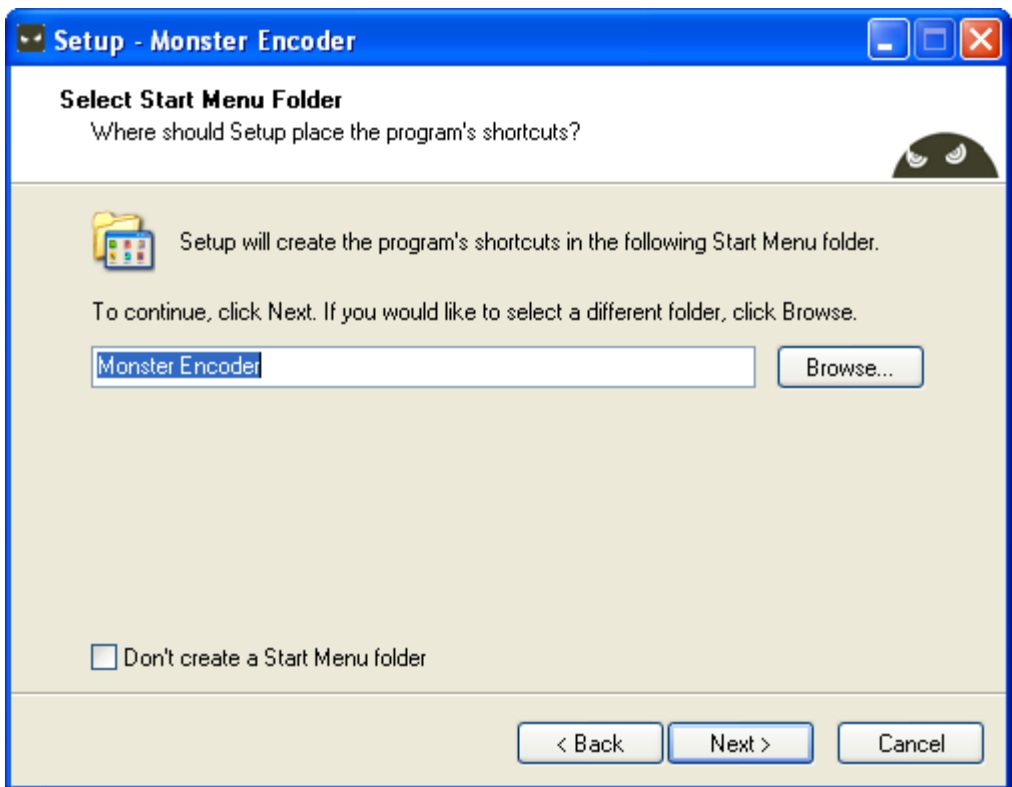
Click on "Next" button to select the destination where the application is installed.



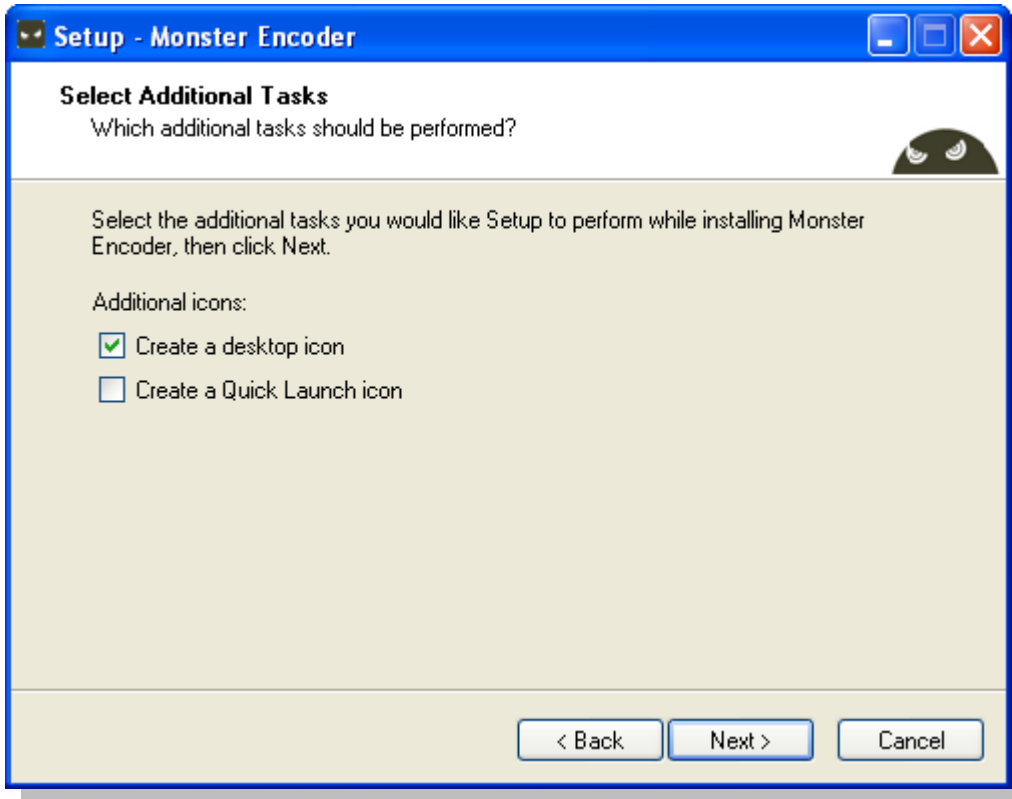
If you want to install the application into a different folder, click on "Browse..." button and select the desired folder. The installer will ask you if you want to create a new folder.



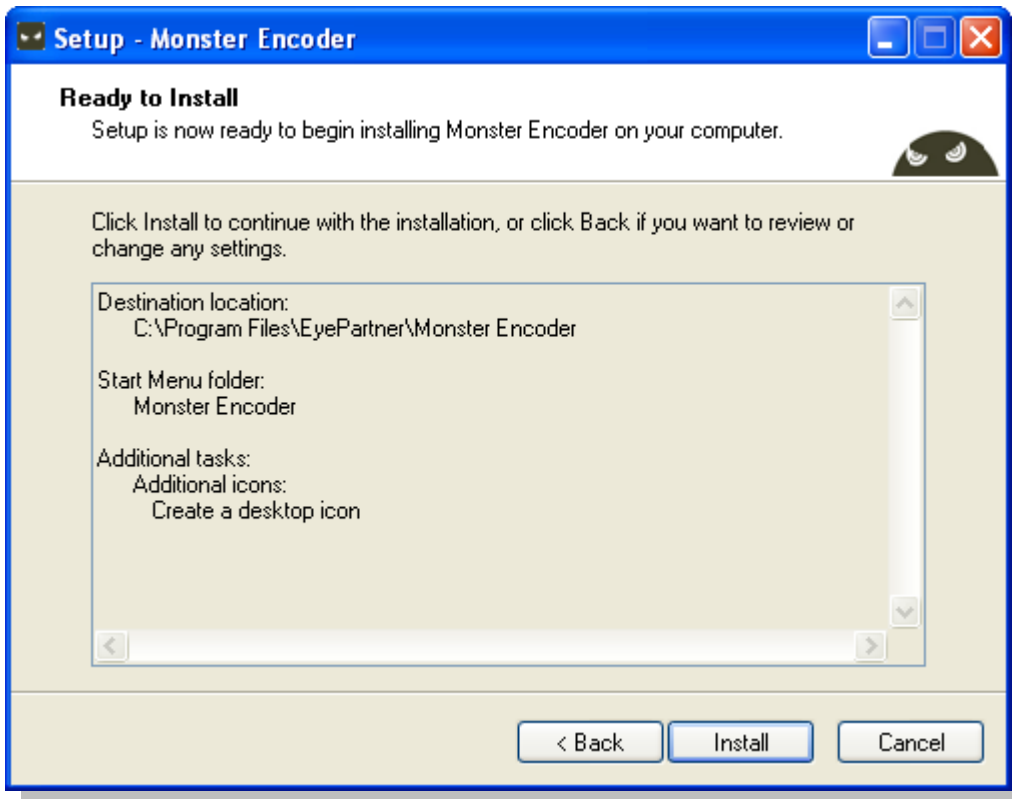
Click on "Next" button to select the program's shortcuts in Start Menu folder. You can check the "Don't create a Start Menu folder" box if you don't want to create a folder for this program into Start Menu Folder.



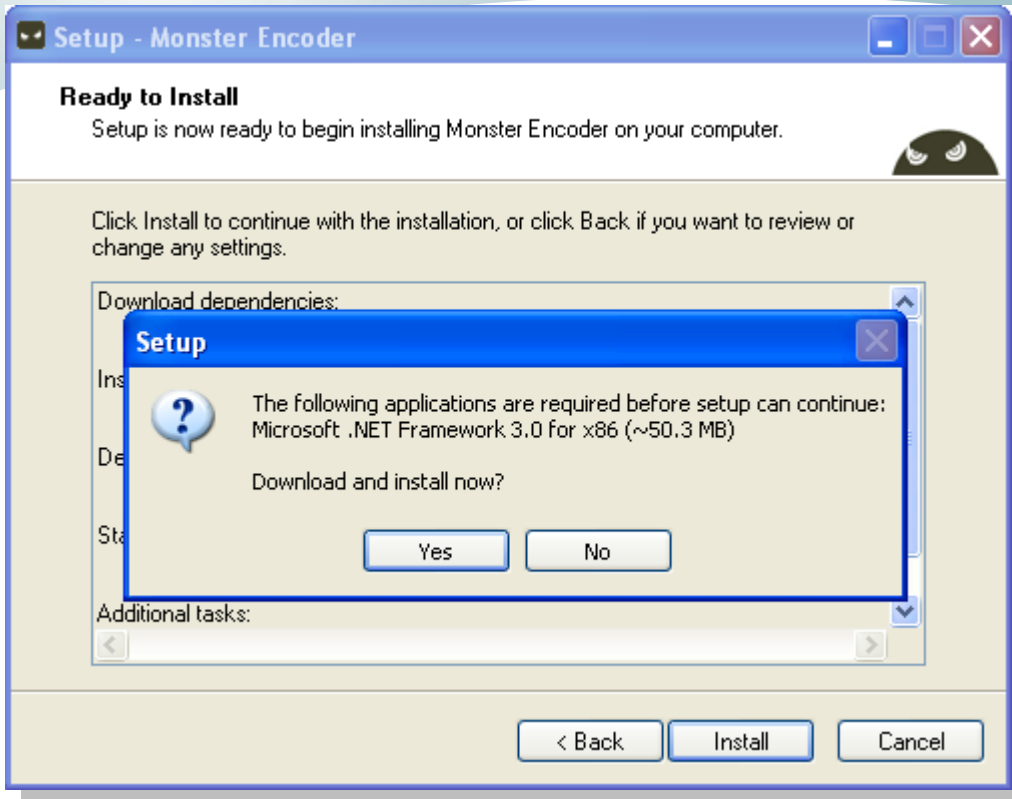
Click "Next" button to select the additional tasks that are performed.



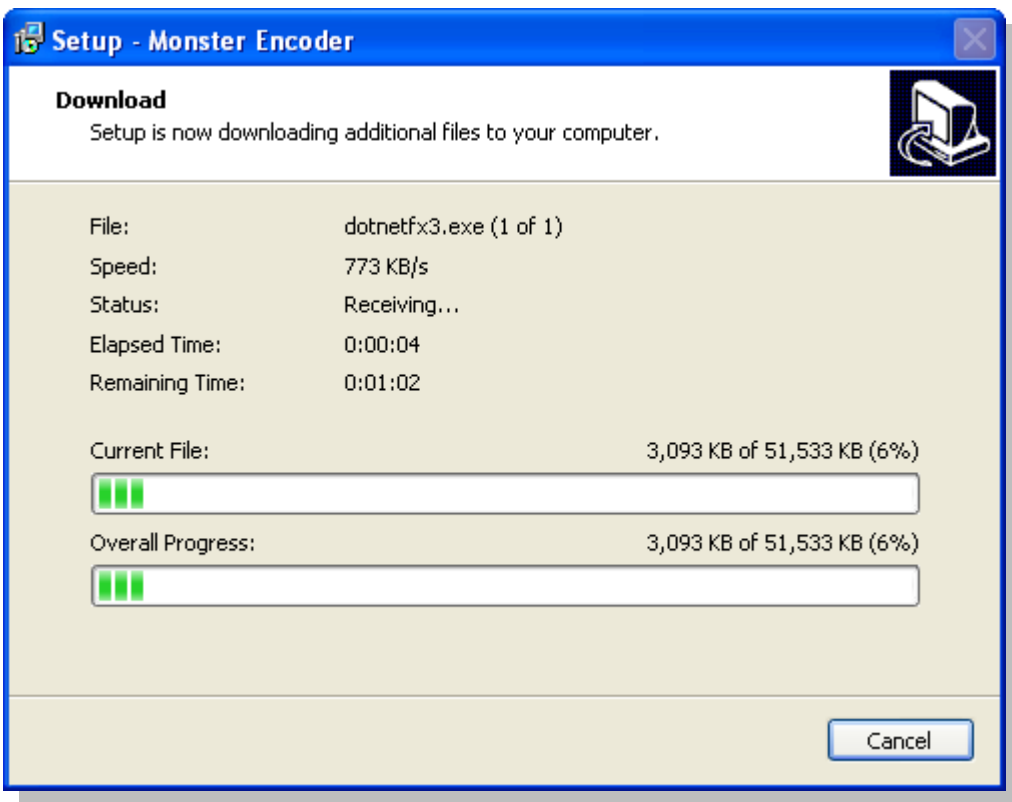
Click "Next" button to go to the next step of the installation process and see the settings.



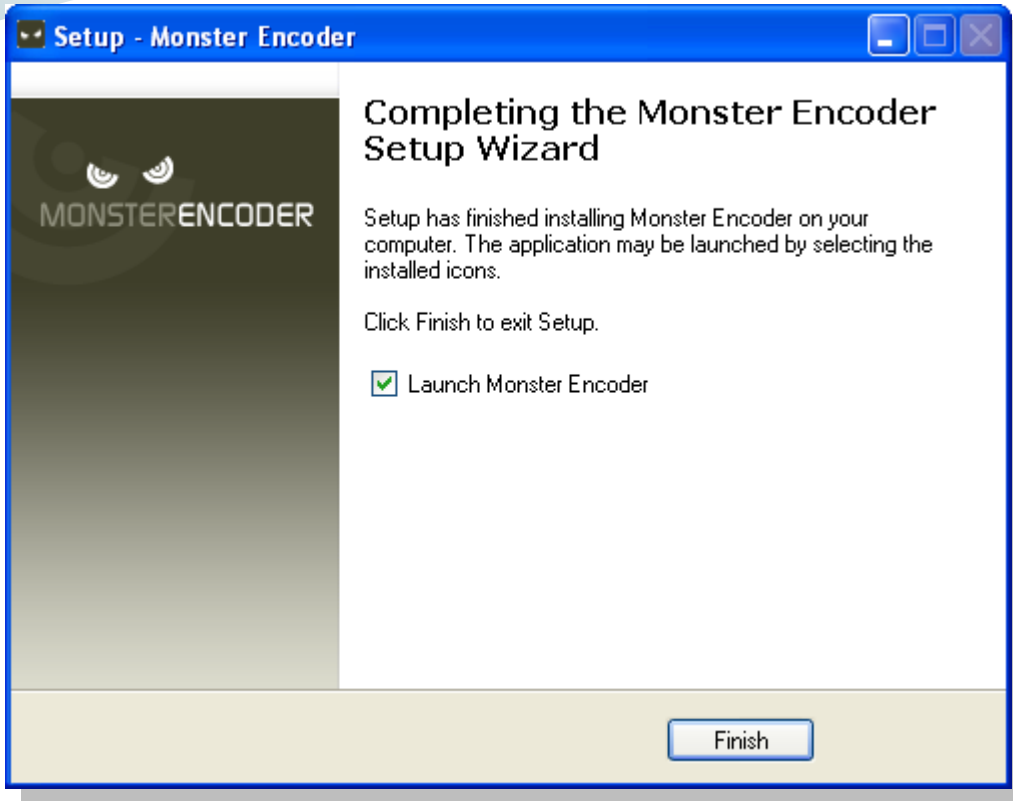
Click on "Install" button to start the installation.



If you don't have Microsoft .NET Framework installed on your computer, the application requests you to download and install it. Click 'yes' and the installation is completed automatically.



Click "Finish" to launch the application.



How to run Monster Encoder application

Note: When you launch the application, it will automatically check for updates.



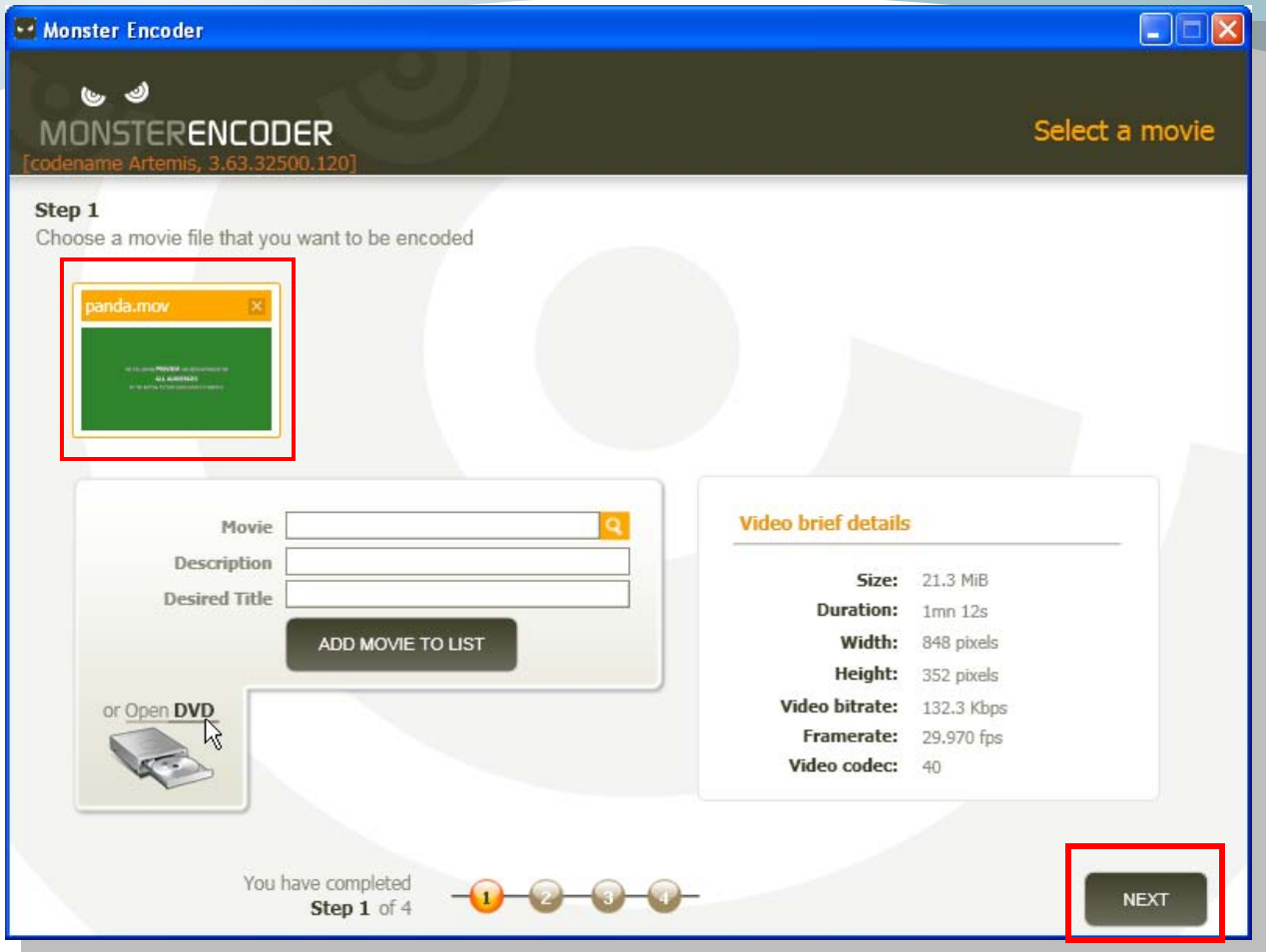
Enter your TikiLive username and password and click "Login" button.



After you log in, click on the magnifier to browse for the movie that you want to upload.

Enter a description and a title for the movie and click on "Add Movie To list" button in order to add the movie into the encoding list.

The same steps apply when uploading a second movie (or more).



After the movie is added in the list, click "Next" button to go to step 2 of Uploading process.



In step 2 you control the settings needed to encode the video file into a .flv format.

If the movie is already in .flv format, you can choose only to upload it to your account using Monster Encoder.

ALLOW US TO NOTIFY YOU ON THE FOLLOWING:

[] Monster Encoder enables you to encode only in .flv format (as this is the format compatible with TikiLIVE VOD players)

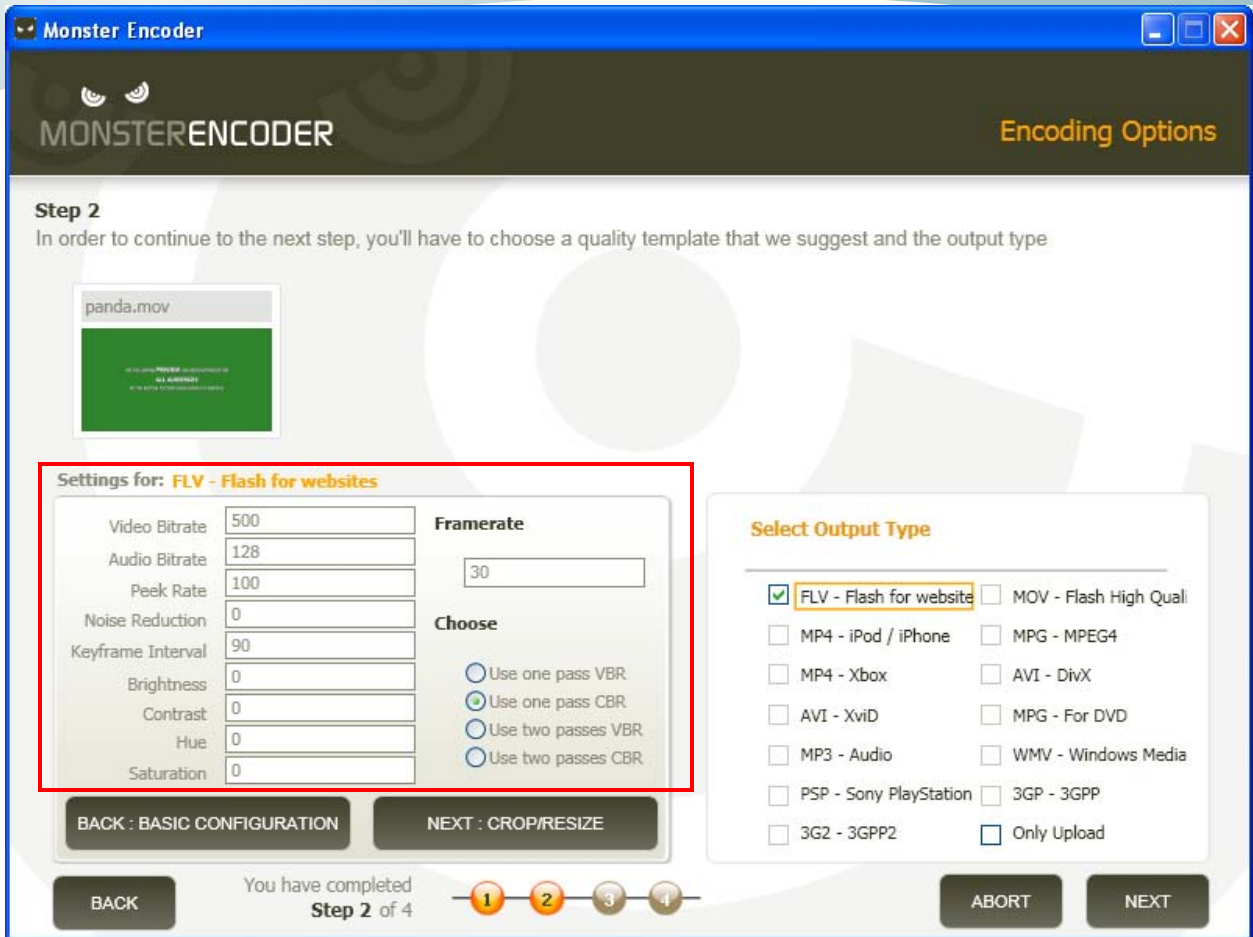
[] Monster Encoder can fail to encode the movies when the file you upload is not 100% functional. Please see below a list of possible errors that might appear if the movie you want to encode is not compatible with Monster Encoder:

URL: <http://manual.monsterencoder.com/monsterencoder/help/93.php>

[] Please see the list of compatible input formats, detailed on specific codecs for audio and video streams at:

URL: <http://manual.monsterencoder.com/monsterencoder/help/83.php>

Attention: Please be advised that we don't assume any responsibility for the files that you directly upload to the site. Please make sure the files you want to encode are 100% functional and compatible with our Encoding solution.



For a better video quality, we recommend encoding the file in .flv format by using Monster Encoder Quality settings. You can select the quality settings from the drop-down menu.

For the FLV video format we recommend the following configuration:

- Video Bit rate: 500
- Audio Bit rate: 128
- Peak Rate : 100
- Noise Reduction: 0
- Key frame Interval: 90
- Brightness: 0
- Contrast: 0
- Hue: 0
- Saturation: 0
- Frame rate: 30

For more information about these fields please see the Glossary details from Monster Encoder manual at this link: <http://manual.monsterencoder.com/monsterencoder/help/62.php>

You can also use the advanced video configuration options by clicking on "Advanced Configuration" button.

Attention: Please be advised that using the advanced mode is recommended only if you know how to control these settings.

Our team's recommendations can be found at:

URL: <http://manual.monsterencoder.com/monsterencoder/help/87.php>



From Advanced Settings, you can modify the codec configuration by clicking on "Next: Codec Config." button.

We recommend the following configuration:

- Sharpness: 0
- Undershoot percentage: 90
- Preload Buffer (seconds): 6
- Optimal buffer: 10
- Maximum Buffer (seconds): 30
- Min/Max Section: 40 – 400
- Minimum Quantize: 2
- Maximum Quantize: 31

For more information about the fields please see the Glossary details from monster Encoder manual at this link: <http://manual.monsterencoder.com/monsterencoder/help/62.php>

Click on "Next" button to go to the last step of the Uploading process.

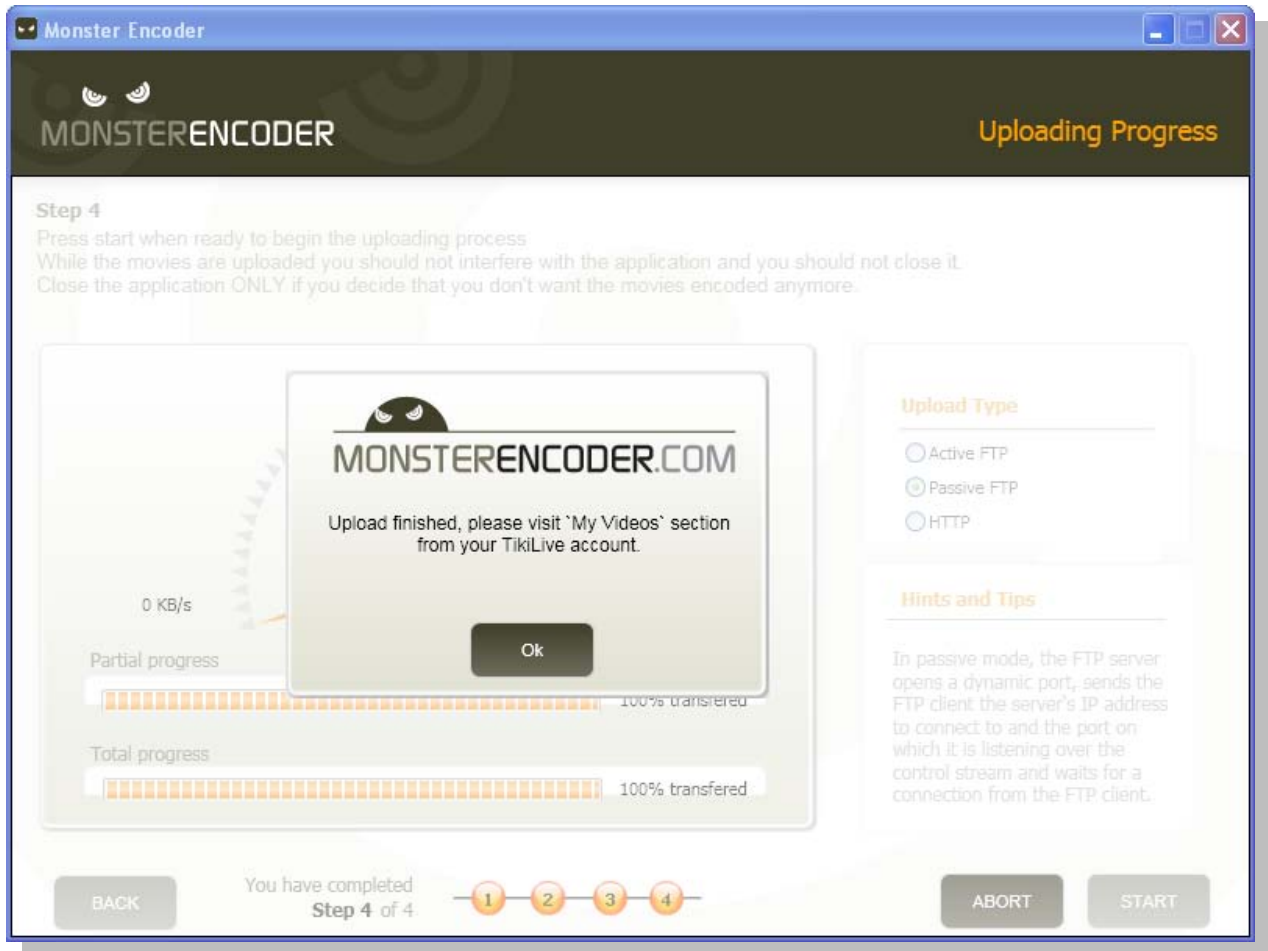


Select the upload type: active FTP, passive FTP or HTTP.

Note: The standard setting is 'Passive FTP'. We recommend keeping this setting for Upload Type option.

Click on "Start" button to start the upload process.

When the upload finishes the following message will appear: "Upload finished, please visit 'My Videos' section from your TikiLive account".



How to view the Encoded Movie

After you receive the notification that the Movie has been uploaded, go to "My Videos" section in your TikiLive account:

- If Movie is still in the encoding process the following message is displayed: *'Encoding'*
- If Movie has been successfully encoded, the following message is displayed: *'Movies sent for encoding – pending'*
- If movie was not 100% compatible with Monster Encoder the message displayed is: *'Error: description of the error'*

Note:

For more details about the Monster Encoder Error notification, please study the following link:

URL: <http://manual.monsterencoder.com/monsterencoder/help/83.php>

How to use Movie Uploader from 'My Videos' section

The Movie Uploader allows the user to upload videos from his account directly in 'My Videos' Section.


Recommended video formats to upload are: .FLV, .MP4, .3GP and .MOV.

When the upload process is successfully finished, the following message is displayed: 'Your video has been successfully uploaded.'

Attention: The team does not take responsibility for the videos uploaded through the Movie Uploader Module due to the different encoding systems that the movies might have been processed with. If the video files are corrupted or broken from the encoding process, the Movie Uploading solution will fail.

My videos

Set a title



Encoded:
Feb 19, 2009
12:21
Total views: 0
★★★★★
0 rated

Upload new video

Please choose a new FLV file to upload (maximum 100M in size):

Choose a name for this video:

Video description:

Choose video file to upload: